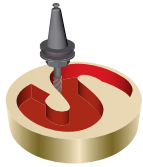




CADNEA

Sistemas de CAD, CAM, CAE e PLM, Lda

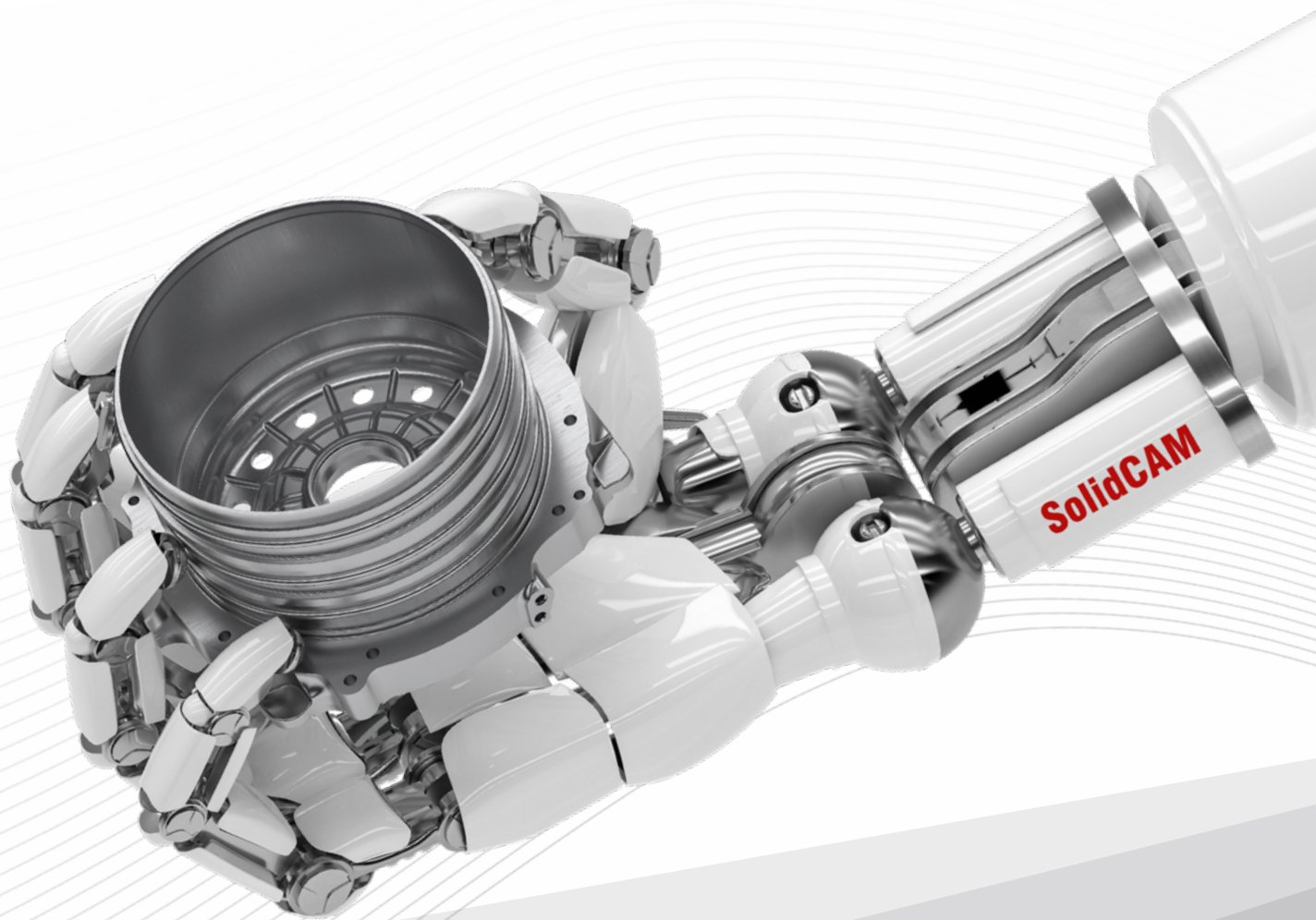
THE FUTURE OF CAM



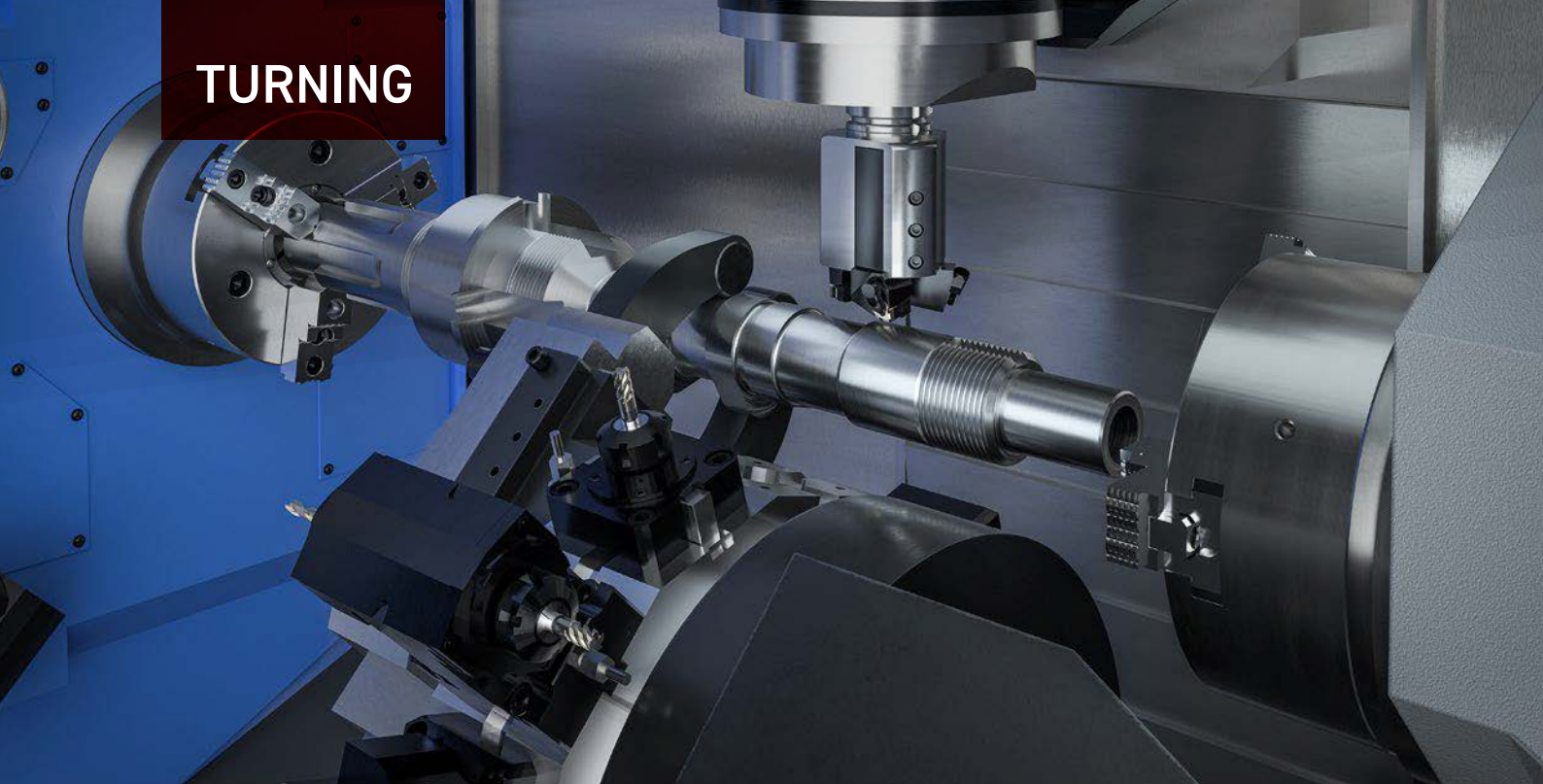
SolidCAM

The Future of CAM in Your Shop Today!

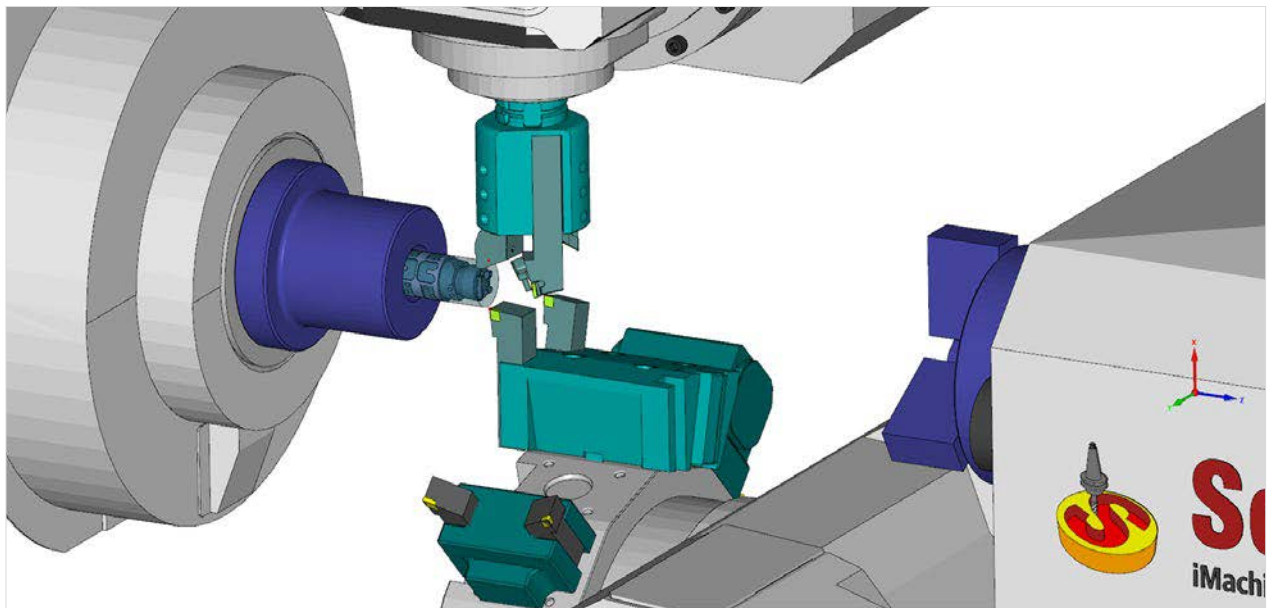
The complete CAM Solution, with revolutionary
iMachining, MillTurn⁺ and Swiss-Type, seamlessly
integrated in SOLIDWORKS[®] and Inventor[®]



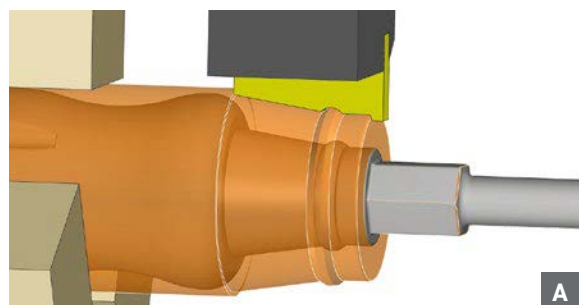
TURNING



SolidCAM Module for Fast and Efficient Turning



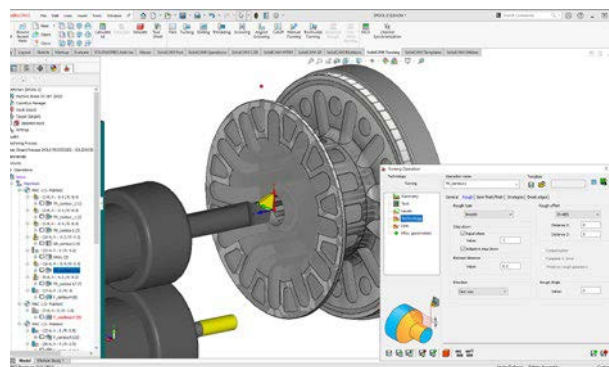
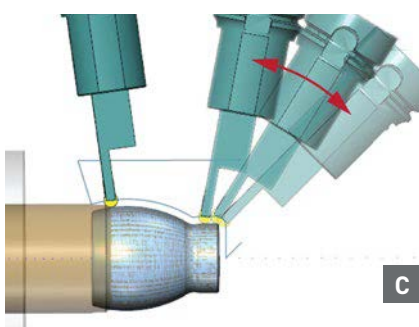
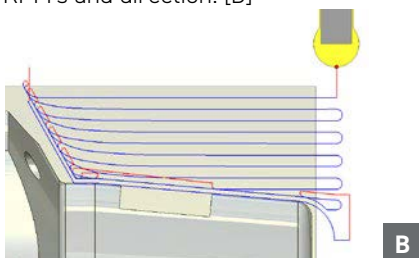
- SolidCAM provides a comprehensive turning package with powerful toolpaths and techniques for fast and efficient turning with fixture and holder protection.
- SolidCAM produces advanced rough and finish profile turning, together with support for facing, grooving, threading and drilling cycles.
- Turning geometries and profile can be generated very quickly, easily adopted or modified for production.
- The Machine Preview allows you to interactively, in machine environment, check and verify your setup and machine position, at every stage of the toolpath, minimizing programming and setup errors.
- SolidCAM turning supports the widest range of machine tools, including 2-Axis lathes, multi-turret configurations with or without sub-spindles.
- Custom turning inserts, shape inserts with multiple cutting edges can be used. [A]





Advanced Turning Capabilities

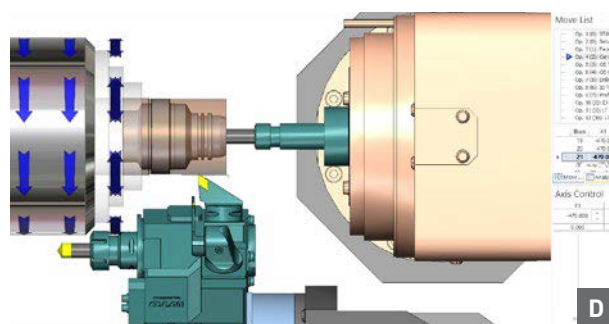
- + **Balanced Roughing:** two turning tools working simultaneously, or in trailing mode, to perform roughing turning of long and large parts.
- + **Angled Grooving:** performs internal or external inclined grooves, at any defined angle.
- + **Manual Turning:** performs turning according to user-defined geometry, regardless of stock and target
- + **A new Trochoidal toolpath of round grooving tools** for increased efficiency [B]
- + **4th Axis Simultaneous Turning:** performs machining of curved profile using the B-axis tilting capabilities of the tool, in order to machine undercut areas in a single machining step. [C]
- + **Drive Unit Sharing:** two tools working simultaneously while single Drive Unit (spindle) rotates with the same RPM's and direction. [D]



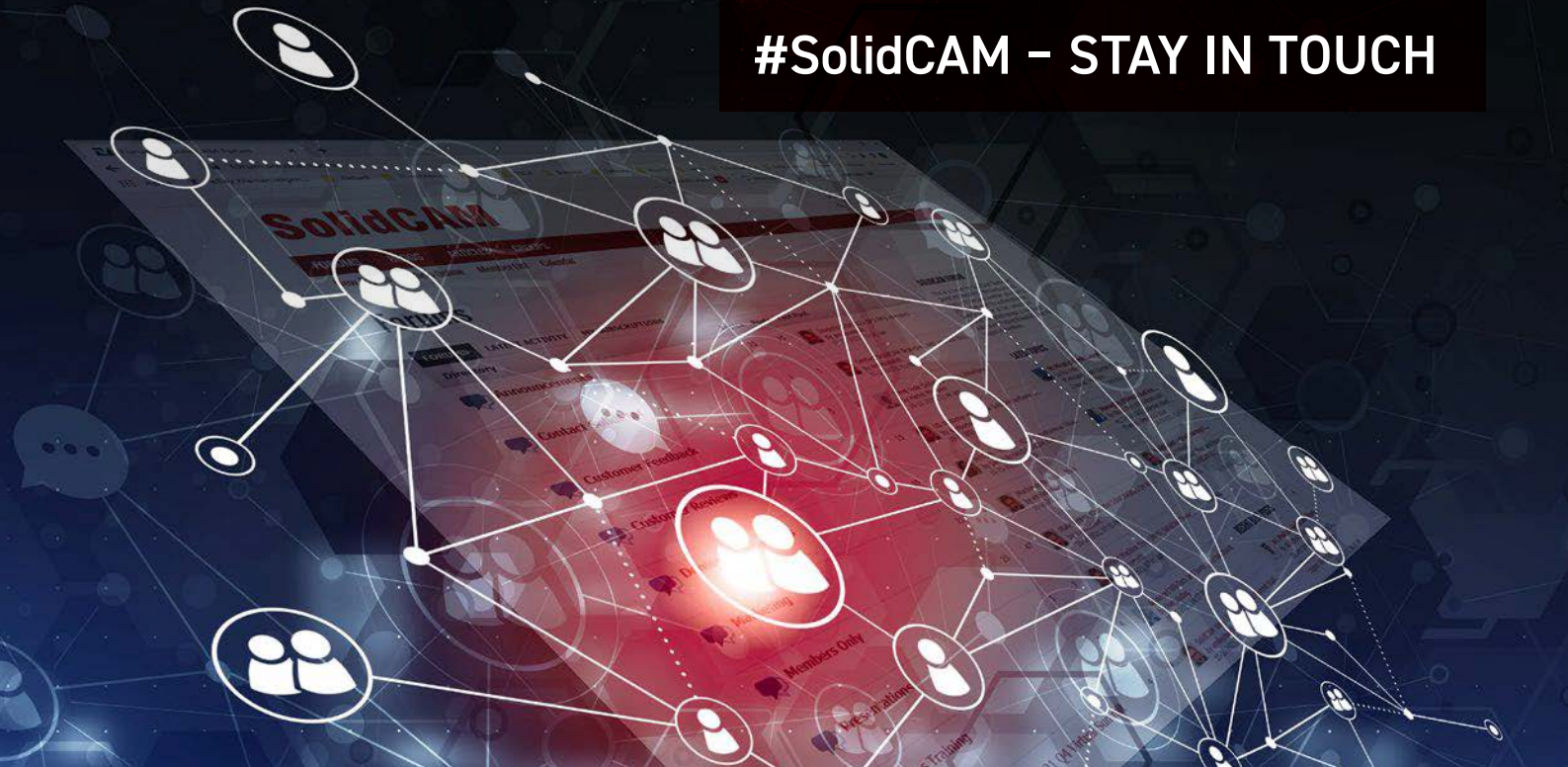
Updated Stock

SolidCAM has the ability to keep the stock updated live within the operations tree. Updated stock is supported from the most basic 2-Axis Turning Center, right through to a CYB Multi-turret, Sub-spindle Mill-Turn CNC-Machine.

On a Sub-spindle Turning Center, when a component is transferred from the main to the sub-spindle, the Updated stock model is transferred with it. Any subsequent machining on the sub-spindle will detect the stock in the state that it left the main spindle, ultimately providing the most efficient machining sequence possible.



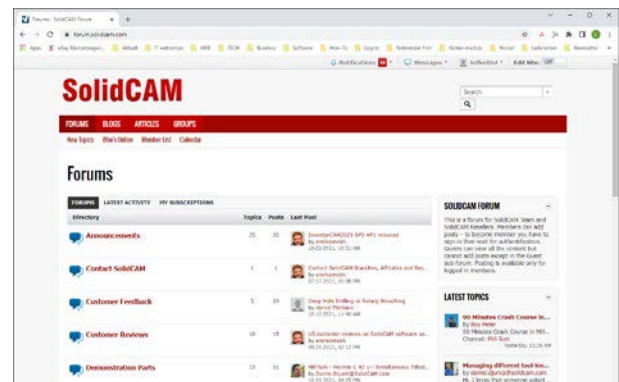
#SolidCAM – STAY IN TOUCH



Welcome to the SolidCAM Forum

We believe that up-to-date information for our customers and resellers is a priority, so we launched the SolidCAM forum, where everyone can get in depth information about SolidCAM products and future developments.

Check out forum.solidcam.com for more details or get the **SolidCAM Forum App** available for IOS and Android from the App-Store & Google Playstore.



SolidCAM on Facebook

Join our Facebook page for daily posts in your News Feed about SolidCAM News, iMachining Success Stories, SolidCAM Professor Recordings, Upcoming Webinars, Events and Product releases.

www.facebook.com/SolidCAM



SolidCAM on YouTube

See recorded SolidCAM webinars and powerful cutting videos of SolidCAM & iMachining, on our SolidCAM YouTube channels:

www.youtube.com/SolidCAMiMachining

www.youtube.com/SolidCAMProfessor



SolidCAM on Twitter

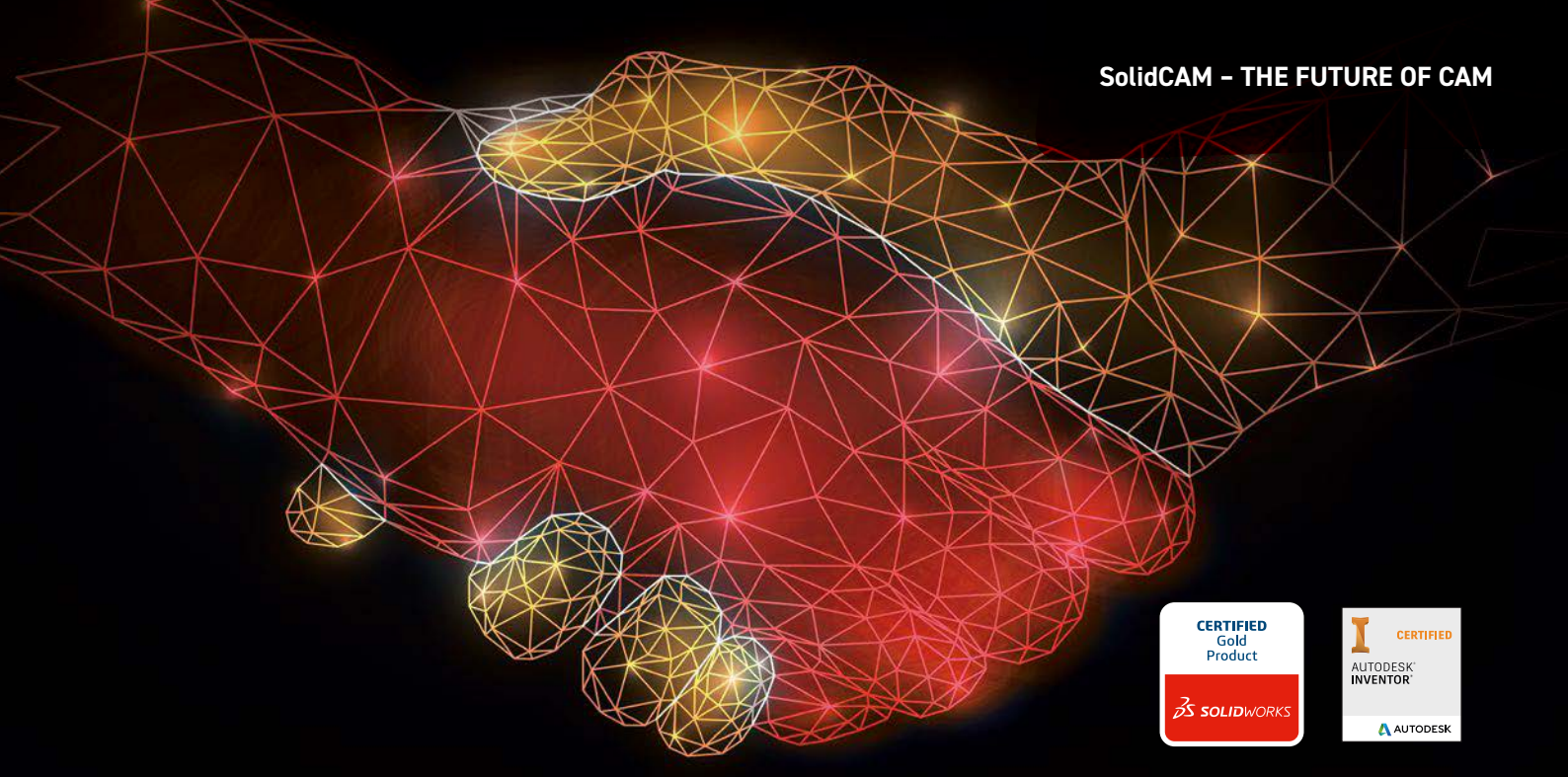
<https://twitter.com/solidcam>



Follow us on Instagram

<https://www.instagram.com/imachining/>





AMERICAS

SolidCAM Inc.

E-Mail: inonorthamerica@solidcam.com
Phone: +1 866 975 1115

ASIA-PACIFIC

SolidCAM ANZ

E-Mail: info@solidcam.com.au
Phone: +61 7 3805 7518

SolidCAM India

E-Mail: info.india@solidcam.com
Phone: +91 11 49425170

SolidCAM China

E-Mail: marketing.china@solidcam.com
Phone: +86 10 8599 7302

SolidCAM Japan K.K.

E-Mail: info.japan@solidcam.com
Phone: +81 3 6300 6730

SolidCAM Korea

E-Mail: info_korea@solidcam.com
Phone: +82 32 876 8762

SolidCAM Singapore Pte Ltd

E-Mail: snges@solidcam.com.sg
Phone: +65 9737 8116

EUROPE

SolidCAM GmbH

E-Mail: info@solidcam.de
Phone: +49 7422 2494-0

SolidCAM UK

E-Mail: info@solidcamuk.com
Phone: +44 1226 241744

SolidCAM France

E-Mail: info@solidcam.fr
Phone: +33 3 4457 1385

SolidCAM Baltics

E-Mail: info@solidcam.lv
Phone: +371 26882932

SolidCAM Italia

E-Mail: info@solidcam.it
Phone: +39 051 0952911

SolidCAM Spain

E-Mail: info@solidcam.es
Phone: +34 900 909 878

SolidCAM CZ

E-Mail: ivan.cimr@solidcam.cz
Phone: +420 603 893 701

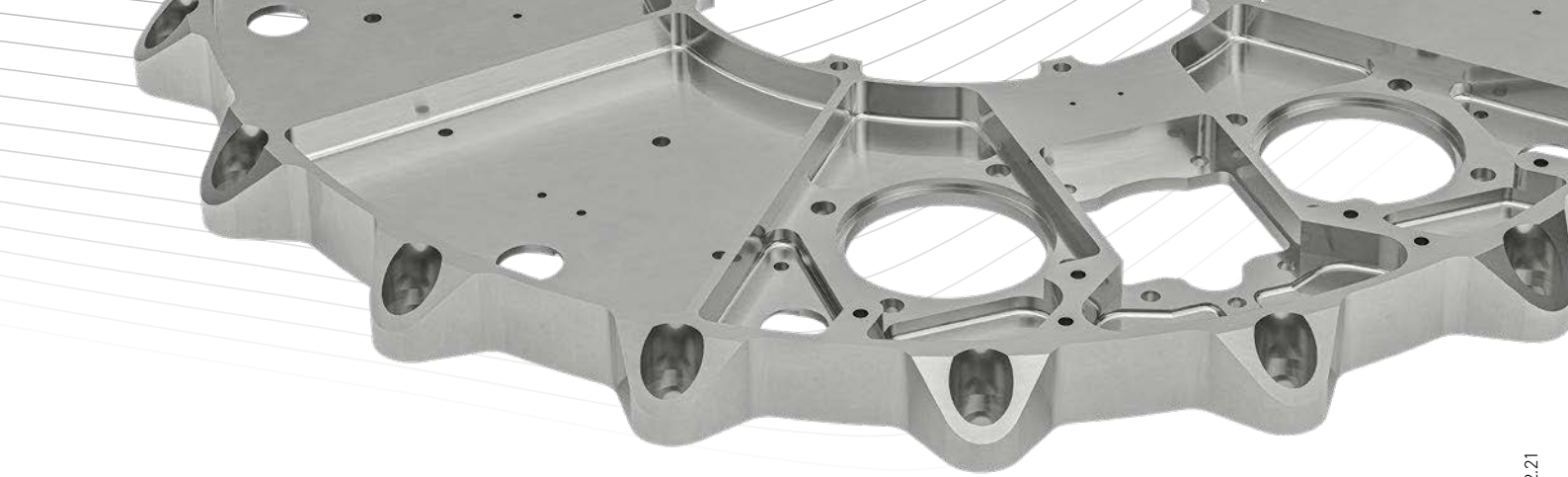
SolidCAM Ltd.

E-Mail: info@solidcam.com
Phone: +972 3 5333 150

SolidCAM in Your Country

Contacting a SolidCAM office or reseller is easy. The complete list of our worldwide, dedicated distribution and support network is available on solidcam.com





” My personal goal was to be able to program all CNC machining operations consistently with a single CAM system. The biggest challenge here was to bring the Swiss-type lathes on board. Thanks to the extensive support provided by SolidCAM, that also worked out wonderfully!”

Steffen Rudischhauser | Managing Director
Rudischhauser Surgical Instruments & Implants Manufacturing GmbH | rudischhauser.com



” What matters to us are the structure and quality of the generated CNC programs that go to the machine, as well as how quickly and easily they can be generated. The service at SolidCAM is unparalleled. The technicians have done a great job with the post-processors for our complex Bumotec machines. And if we ever have a problem, someone from the support team is immediately offering help. These days, that isn't a given; it's unique!”

Stjepan Matacun | Production Manager
Stuckenbrock Medizintechnik GmbH

” After only two weeks with SolidCAM we had more success than with the previous CAM system after three years. We can now program the most complex workpieces much faster. Creating the tools is much easier and I can already program a part even if the final tool data is not yet completely available. This was not possible in the past.”

Franz Fuchs | CNC & CAM Programming
Hefter Maschinenbau GmbH & Co. KG | hefter.de

