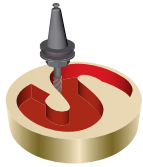




**CADNEA**

Sistemas de CAD, CAM, CAE e PLM, Lda

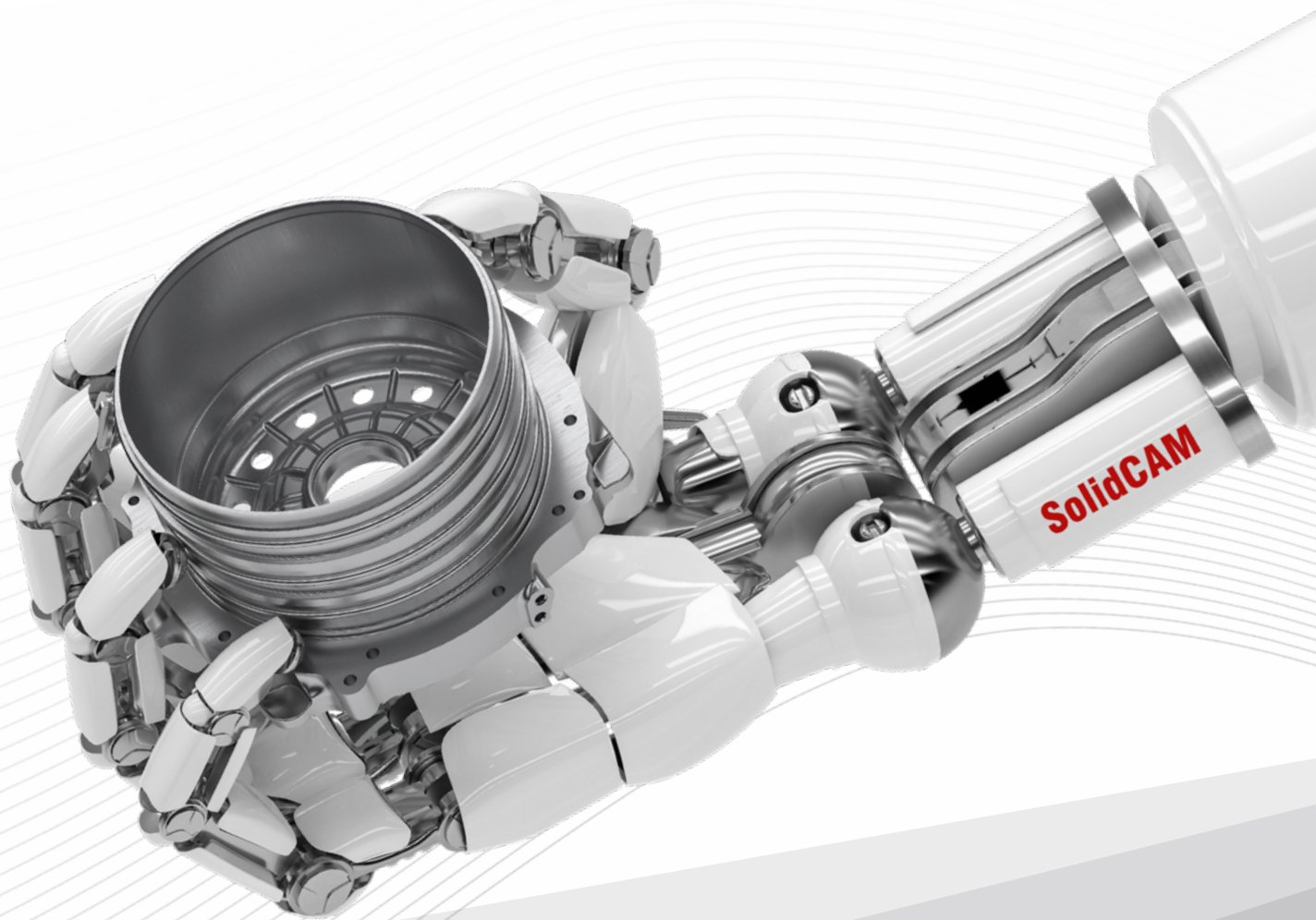
THE FUTURE OF CAM

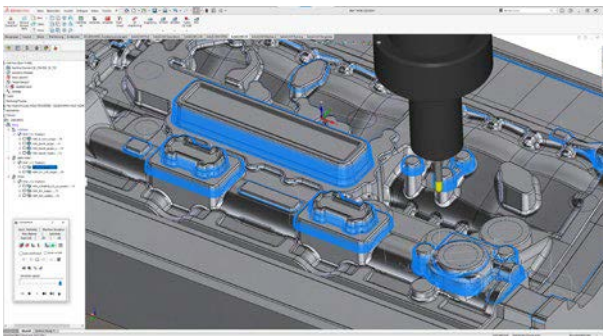


# SolidCAM

## The Future of CAM in Your Shop Today!

The complete CAM Solution, with revolutionary  
iMachining, MillTurn<sup>+</sup> and Swiss-Type, seamlessly  
integrated in SOLIDWORKS<sup>®</sup> and Inventor<sup>®</sup>





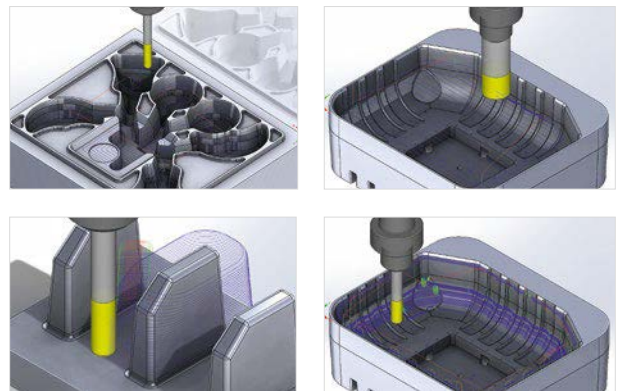
SolidCAM High-Speed Machining (HSM) offers unique machining and linking strategies for 3D high-speed toolpaths. It smooths the paths of both cutting moves and retracts, wherever possible, to maintain a continuous machine tool motion – an essential requirement for maintaining higher feed rates and eliminating dwelling.

- + 3D machining taken to an entirely new level of smoothness, efficiency and smart machining.
- + The finest toolpaths available anywhere for complex 3D parts, aerospace parts, molds, tools and dies.



## HSR – High Speed Roughing

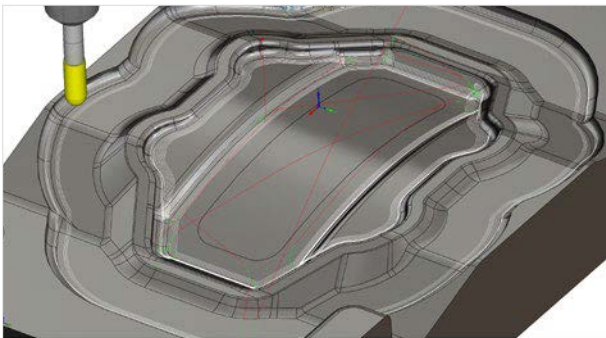
SolidCAM HSR provides powerful high-speed roughing strategies including contour, hatch, hybrid rib-roughing and rest roughing.



## High Speed Finishing

With SolidCAM's HSM module, retracts to high Z levels are kept to a minimum. Angled where possible and smoothed by arcs, retracts don't go higher than necessary, minimizing air cutting and machining time.

- + Efficient and smooth toolpath that translates to increased surface quality, less wear on your tools and a longer life for your machine tools
- + High Speed Machining is a must in today's machine shops to handle demands for ever-shorter lead and production times, lower costs and improved quality



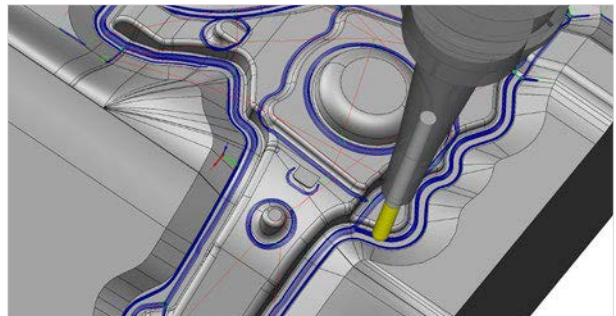
## 3D Machining to the Highest Level

SolidCAM HSM module is a powerful solution for all users who demand advanced High-Speed Machining capabilities. It can also be used to improve the productivity of older CNC's with reduced air cutting and smoothing arcs that maintain continuous tool motion.

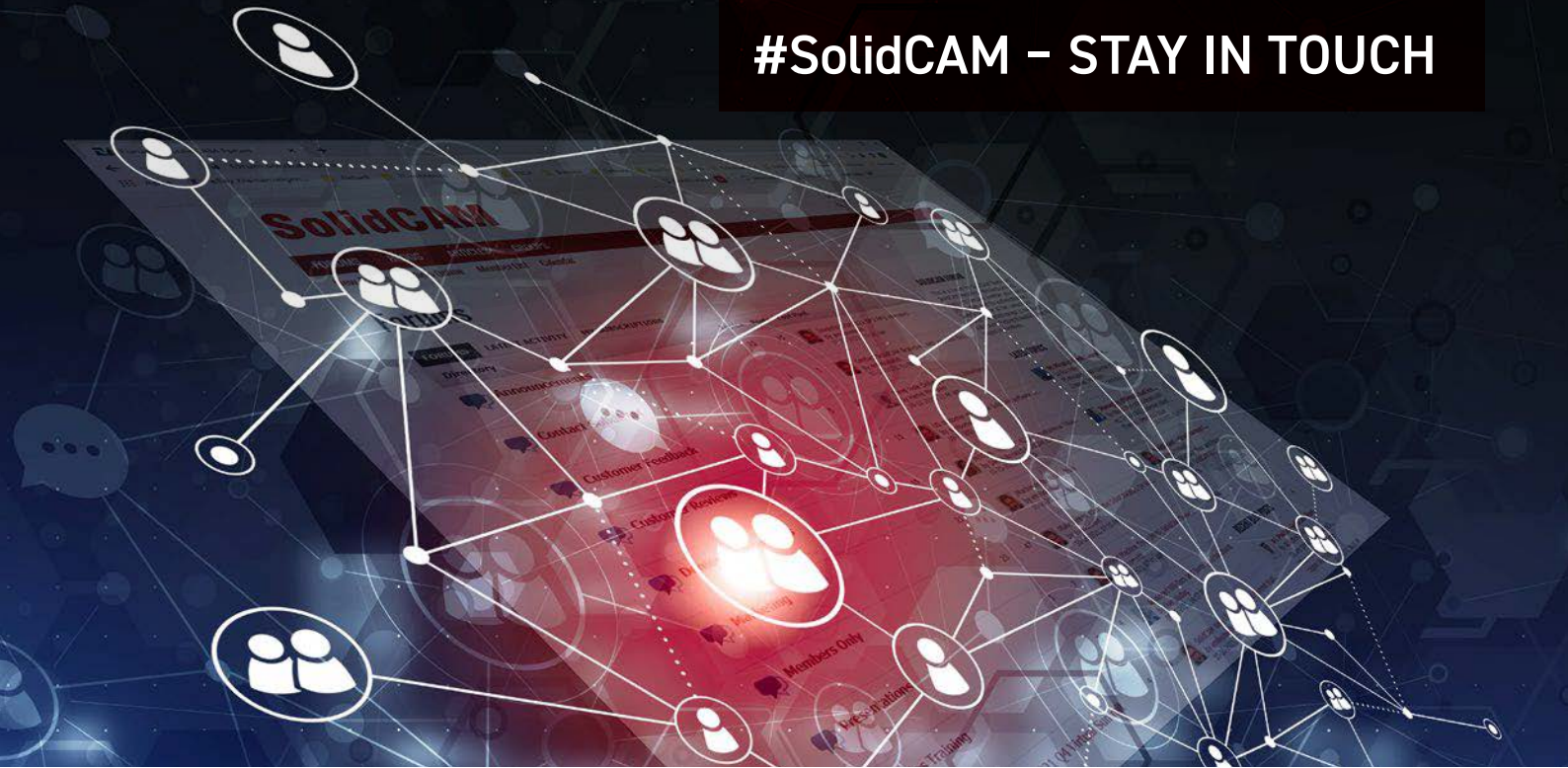
Let us show you how HSM takes 3D Machining performance to the highest level – all with your current machines.

The SolidCAM HSM module features several enhancements to CAM technology that make high speed operations possible, e.g. avoiding sharp angles in the tool path and generating smooth and tangential lead in/out.

- ⊕ Tool stays in contact with the material as much as possible and non-machining moves are reduced.
- ⊕ Working area can be precisely controlled with an extensive set of options that are available, including silhouette boundaries, cutter contact area boundaries, shallow area boundaries, rest area boundaries.
- ⊕ HSR/HSM toolpaths can be edited after toolpath creation using working areas, Z-level limits or a combination of both to control cutting moves or to exclude specific areas from machining.



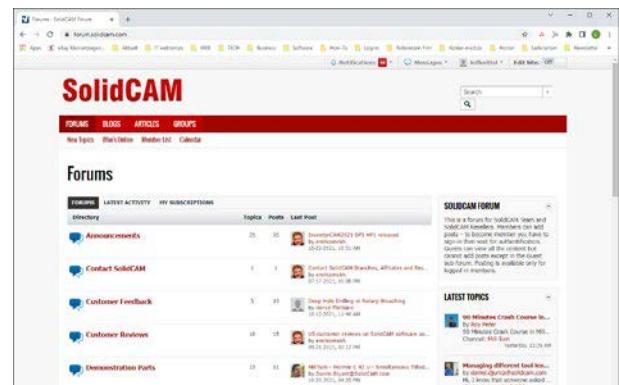
# #SolidCAM – STAY IN TOUCH



## Welcome to the SolidCAM Forum

We believe that up-to-date information for our customers and resellers is a priority, so we launched the SolidCAM forum, where everyone can get in depth information about SolidCAM products and future developments.

Check out [forum.solidcam.com](http://forum.solidcam.com) for more details or get the **SolidCAM Forum App** available for IOS and Android from the App-Store & Google Playstore.



## SolidCAM on Facebook

Join our Facebook page for daily posts in your News Feed about SolidCAM News, iMachining Success Stories, SolidCAM Professor Recordings, Upcoming Webinars, Events and Product releases.

[www.facebook.com/SolidCAM](http://www.facebook.com/SolidCAM)



## SolidCAM on YouTube

See recorded SolidCAM webinars and powerful cutting videos of SolidCAM & iMachining, on our SolidCAM YouTube channels:

[www.youtube.com/SolidCAMiMachining](http://www.youtube.com/SolidCAMiMachining)

[www.youtube.com/SolidCAMProfessor](http://www.youtube.com/SolidCAMProfessor)



## SolidCAM on Twitter

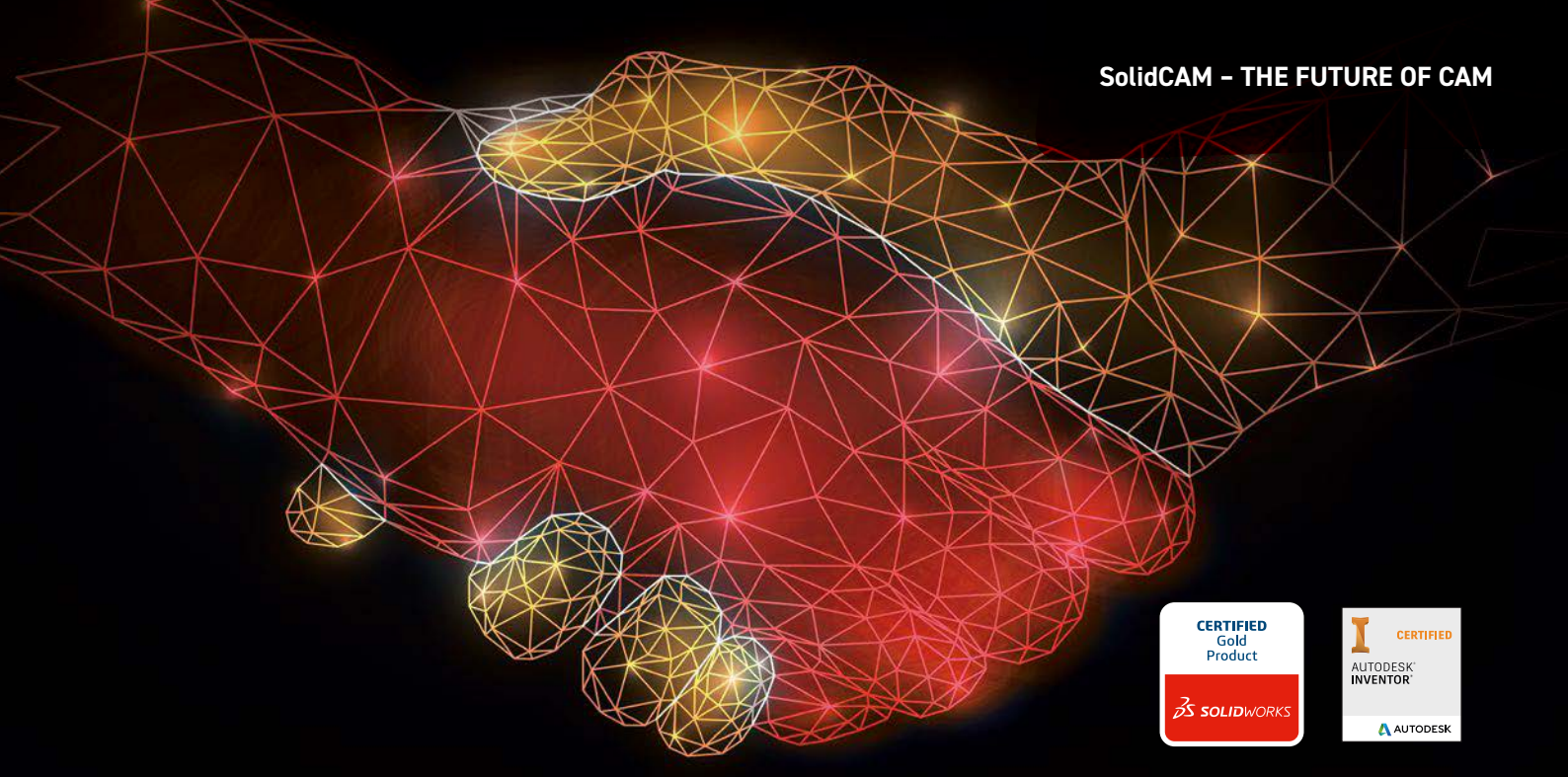
<https://twitter.com/solidcam>



## Follow us on Instagram

<https://www.instagram.com/imachining/>





## AMERICAS

### **SolidCAM Inc.**

E-Mail: [inonorthamerica@solidcam.com](mailto:inonorthamerica@solidcam.com)  
Phone: +1 866 975 1115

## ASIA-PACIFIC

### **SolidCAM ANZ**

E-Mail: [info@solidcam.com.au](mailto:info@solidcam.com.au)  
Phone: +61 7 3805 7518

### **SolidCAM India**

E-Mail: [info.india@solidcam.com](mailto:info.india@solidcam.com)  
Phone: +91 11 49425170

### **SolidCAM China**

E-Mail: [marketing.china@solidcam.com](mailto:marketing.china@solidcam.com)  
Phone: +86 10 8599 7302

### **SolidCAM Japan K.K.**

E-Mail: [info.japan@solidcam.com](mailto:info.japan@solidcam.com)  
Phone: +81 3 6300 6730

### **SolidCAM Korea**

E-Mail: [info\\_korea@solidcam.com](mailto:info_korea@solidcam.com)  
Phone: +82 32 876 8762

### **SolidCAM Singapore Pte Ltd**

E-Mail: [snges@solidcam.com.sg](mailto:snges@solidcam.com.sg)  
Phone: +65 9737 8116

## EUROPE

### **SolidCAM GmbH**

E-Mail: [info@solidcam.de](mailto:info@solidcam.de)  
Phone: +49 7422 2494-0

### **SolidCAM UK**

E-Mail: [info@solidcamuk.com](mailto:info@solidcamuk.com)  
Phone: +44 1226 241744

### **SolidCAM France**

E-Mail: [info@solidcam.fr](mailto:info@solidcam.fr)  
Phone: +33 3 4457 1385

### **SolidCAM Baltics**

E-Mail: [info@solidcam.lv](mailto:info@solidcam.lv)  
Phone: +371 26882932

### **SolidCAM Italia**

E-Mail: [info@solidcam.it](mailto:info@solidcam.it)  
Phone: +39 051 0952911

### **SolidCAM Spain**

E-Mail: [info@solidcam.es](mailto:info@solidcam.es)  
Phone: +34 900 909 878

### **SolidCAM CZ**

E-Mail: [ivan.cimr@solidcam.cz](mailto:ivan.cimr@solidcam.cz)  
Phone: +420 603 893 701

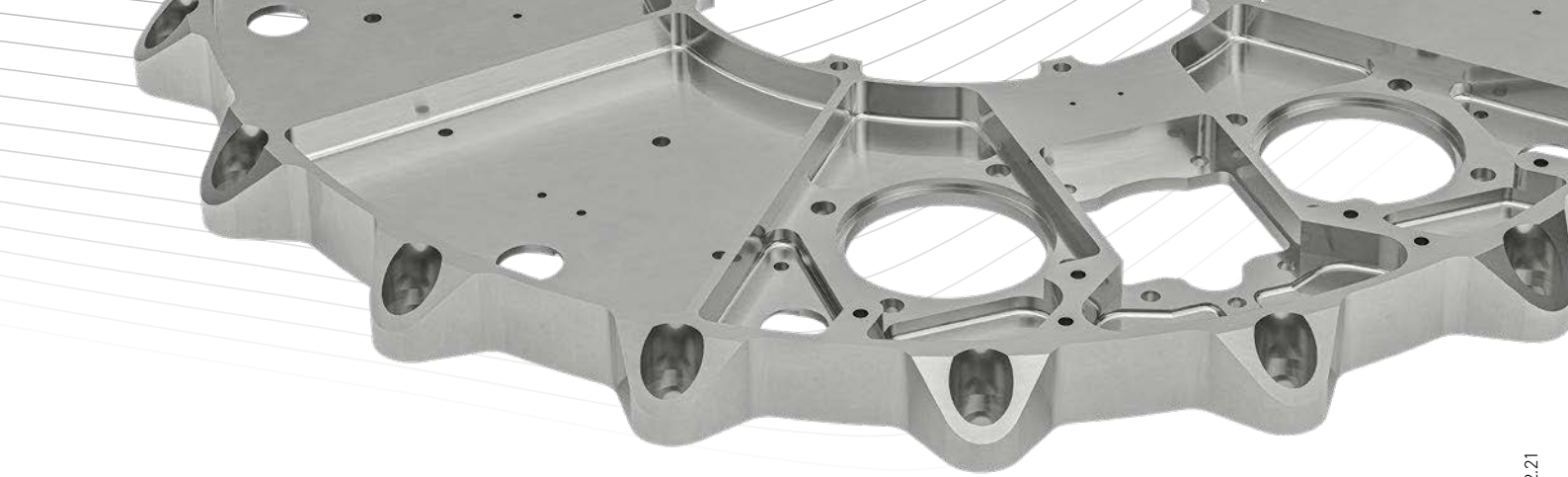
### **SolidCAM Ltd.**

E-Mail: [info@solidcam.com](mailto:info@solidcam.com)  
Phone: +972 3 5333 150

### **SolidCAM in Your Country**

Contacting a SolidCAM office or reseller is easy. The complete list of our worldwide, dedicated distribution and support network is available on [solidcam.com](http://solidcam.com)





” My personal goal was to be able to program all CNC machining operations consistently with a single CAM system. The biggest challenge here was to bring the Swiss-type lathes on board. Thanks to the extensive support provided by SolidCAM, that also worked out wonderfully!”

Steffen Rudischhauser | Managing Director  
Rudischhauser Surgical Instruments & Implants Manufacturing GmbH | rudischhauser.com



” What matters to us are the structure and quality of the generated CNC programs that go to the machine, as well as how quickly and easily they can be generated. The service at SolidCAM is unparalleled. The technicians have done a great job with the post-processors for our complex Bumotec machines. And if we ever have a problem, someone from the support team is immediately offering help. These days, that isn't a given; it's unique!”

Stjepan Matacun | Production Manager  
Stuckenbrock Medizintechnik GmbH

” After only two weeks with SolidCAM we had more success than with the previous CAM system after three years. We can now program the most complex workpieces much faster. Creating the tools is much easier and I can already program a part even if the final tool data is not yet completely available. This was not possible in the past.”

Franz Fuchs | CNC & CAM Programming  
Hefter Maschinenbau GmbH & Co. KG | hefter.de

